

INSTALLATION INSTRUCTIONS

DESCRIPTION: 4 Point Harness Kit Front

PART NUMBER: B4M-F47K0-V0

MODEL: 2021+ Wolverine RMAX2, RMAX4, X2 850 and X4 850



WARNING

Please read and understand these instructions completely before installation to avoid possible injury, or damage to the accessory or vehicle. Failure to install seat belts correctly could result in serious injury or death. Check harness fit before and during each ride. Rough riding will tend to settle belts and loosen them.

WARRANTY INFORMATION:

In the United States, see your Yamaha dealer for a copy of the Yamaha Genuine Parts and Accessories Limited Warranty.

DEALER OR INSTALLER:

These instructions contain important information for future reference and *must* be given to the customer.

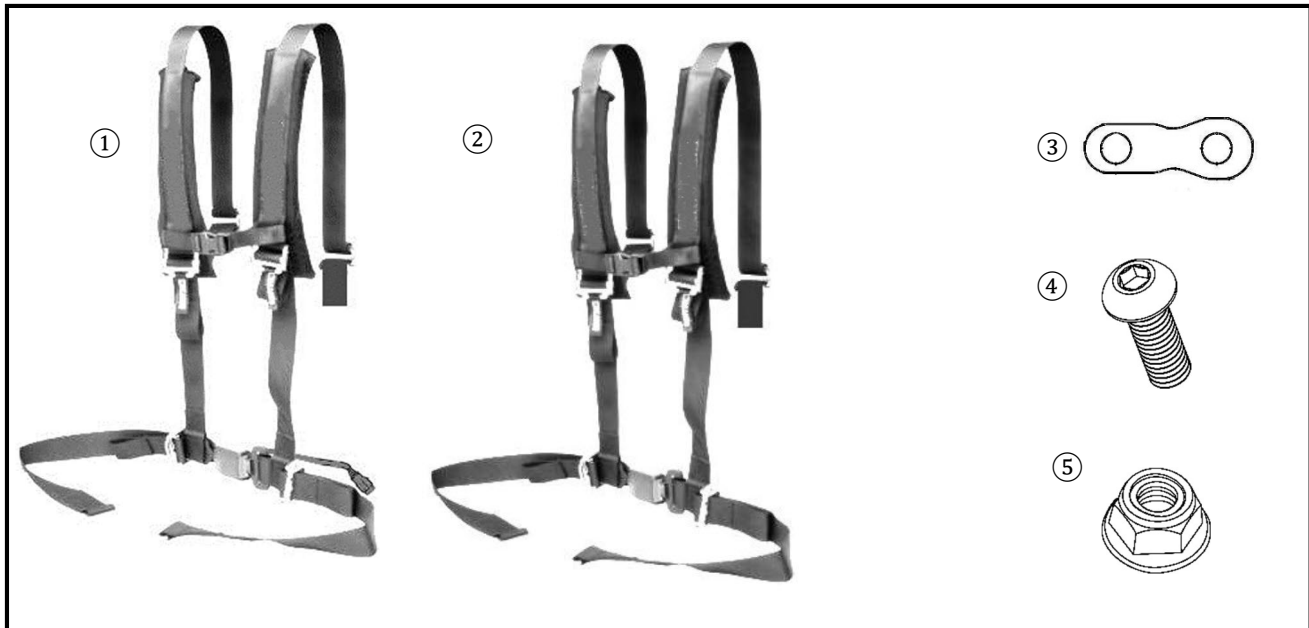
NOTICE:

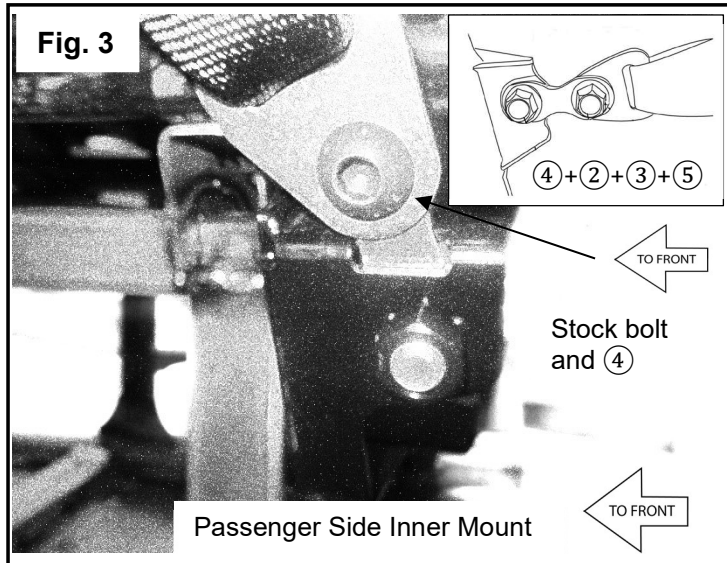
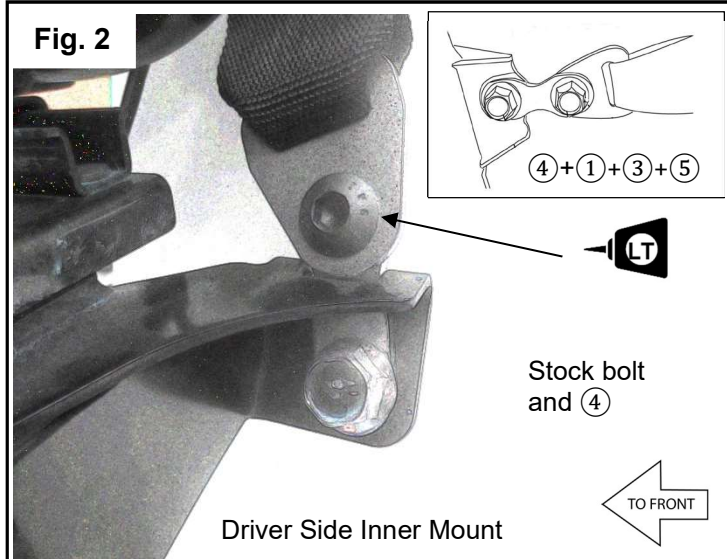
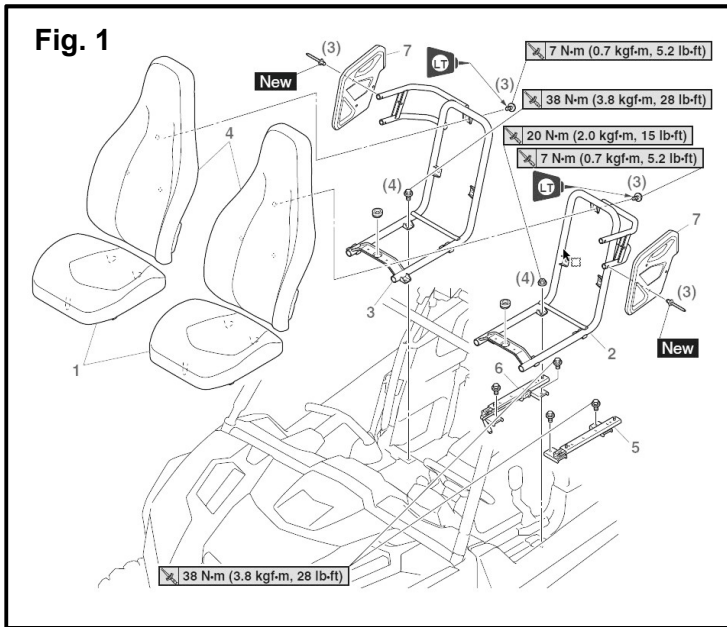
Installation of this kit requires a torque wrench and should be performed by an authorized Yamaha dealer.

PARTS LIST:

No.	Part Number	Description	Qty
--	B4M-F47K0-V0	4 Point Harness Kit Front	--
①	*	Driver Side Harness	1
②	*	Passenger Side Harness	1
③	*	Bracket	2
④	*	M12x20 Button Head Screw	2
⑤	*	M12 Flanged Lock Nut	2

* Part supplied with kit only and not available separately.





PREPARATION and REMOVAL

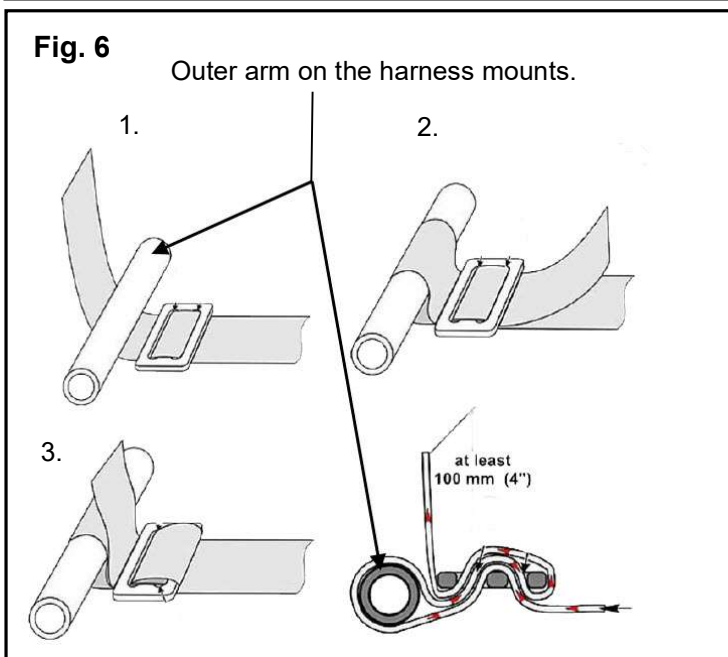
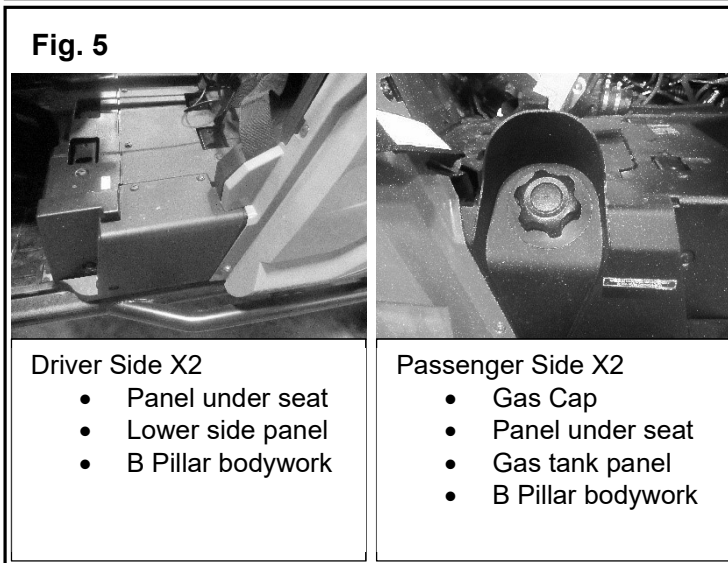
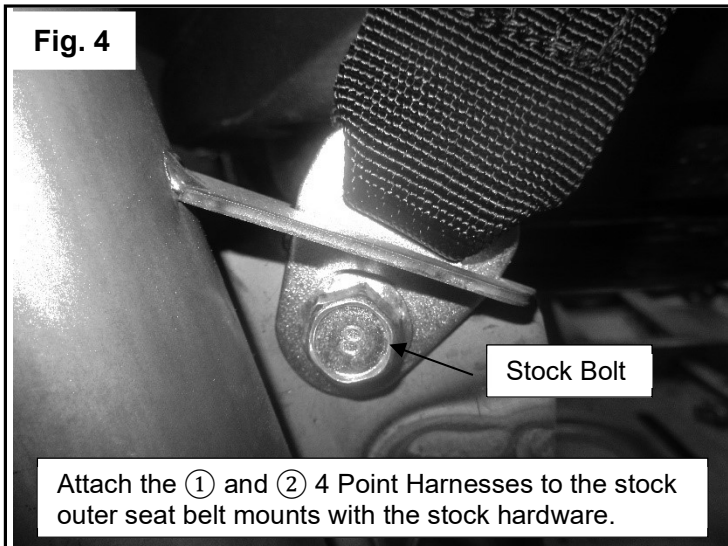
- Place the vehicle on a secure and level surface.
- Set the parking brake.
- Clean the mounting surfaces before beginning installation.
- Remove the following as per the service manual:
 - a. driver's seat and seat belt (Fig. 1)
 - b. passenger's seat and seat belt (Fig. 1)
 - c. Both front plastic seat panels under the seat frames.
 - d. disconnect the seat belt switch coupler on the driver's seat belt
 - e. Both seat belt buckle rubber boots for reuse.
 - f. Retain the M12 bolts from the stock lap belts for reuse.
- Install **B4J-F47P0-V0 4 Point Harness Mount Kit** before installing this kit.

INSTALLATION: RMAX4 and X4

1. Slide the rubber boot on the ① 4 Point Harness (Drivers Side) in the same orientation as the stock seat belt.
2. Install one of the ③ Brackets. Stock bolts are used to attach the bracket to frame. Ensure angle of bracket is parallel to the direction of the belt. (Fig. 2)
3. Repeat step 1 and 2 on the passenger side and reuse the stock hardware. (Fig. 3)
4. **Driver Side Inner Attachment:** Insert ④ M12x20 Button Bolt through ① 4 Point Harness and then ③ Bracket. Use thread locking fluid (Loctite 242) on the ④ M12x20 Button Bolt. Thread on ⑤ M12 Flange Nut to attach lap belts to the ③ Bracket. (Bolt head facing to the driver.)
5. **Passenger Side Inner Attachment:** Insert ④ M12x20 Button Bolt through ② 4 Point Harness and then ③ Bracket. Use thread locking fluid (Loctite 242) on the ④ M12x20 Button Bolt. Thread on ⑤ M12 Flange Nut to attach lap belts to the ③ Bracket with the ④ M12x20 Button Bolt. (Bolt head facing the engine.)
6. Attach the ① and ② 4 Point Harnesses outer mounts to the frame using the stock bolts. On both the driver and passenger sides. (Fig. 4)
7. Torque all bolts used to install the 4 Point Harness to 59Nm (5.9 m-kg or 44 lb-ft). (Fig. 1, 2 and 3)
8. On the driver's side seat belt, connect the seat belt sensor cable to the vehicle harness.
9. Reinstall all the parts removed and torque to the same specifications from the service manual.

INSTALLATION: RMAX2 and X2

1. X2 installation will require removal of additional panels on both sides of the vehicle. Retain hardware for reuse. (Fig. 5)



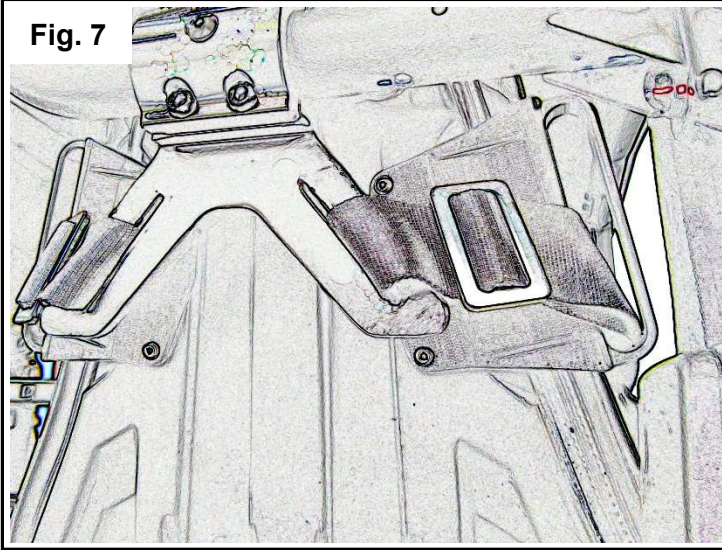
2. Once the panels are removed, install the ① and ② 4 Point Harnesses by following the installation procedure from above.
3. Body panels are reinstalled and torqued to 7Nm (0.7 m-kg or 5.2 lb-ft).

UPPER HARNESS ATTACHMENT

1. Wrap the ①+② 4 Point Harness shoulder straps (2 per seat) to the Harness Mounts behind seats. Route them into the Seat Protectors. Adjust belt and buckle to your desired length. (Fig. 6 image 1 and 2) and (Fig. 7)
2. Seat the occupant in the vehicle and adjust the lap belts first. Lift the buckle side loop and pull slack down until the belt lays flat across their lap.
3. Adjust shoulder harness straps next. Sit straight in the seat and pull down to remove slack in the straps. Harness straps should be snug, but comfortable. (Note: the sternum strap should be at least 4" below the neckline). Check to ensure slack will not snag on moving parts or trail hazards before riding.
4. Keep tension on the first wrap and feed slack through the bottom front side of buckle, then pull tight as shown in Fig. 6. Wrap remaining slack up and over buckle, feeding through the top slot (from the front side) and pull the strap tight. This will set the adjustment of the upper harness straps. (Fig. 6 image 3)

Note: If the seats are unoccupied then tighten the rear 4 point harnesses so they do not move around.

Fig. 7



MAINTENANCE:

Periodically, check torque on all hardware. If loose hardware is found, re-torque to specification.

CARE AND CLEANING:

Clean painted metal parts with a clean soft cloth and mild soap and water solution. Rinse and dry.

CUSTOMER SERVICE:

For further information see your Yamaha dealer.

ESTIMATED TIME TO INSTALL: 1.0 HRS.